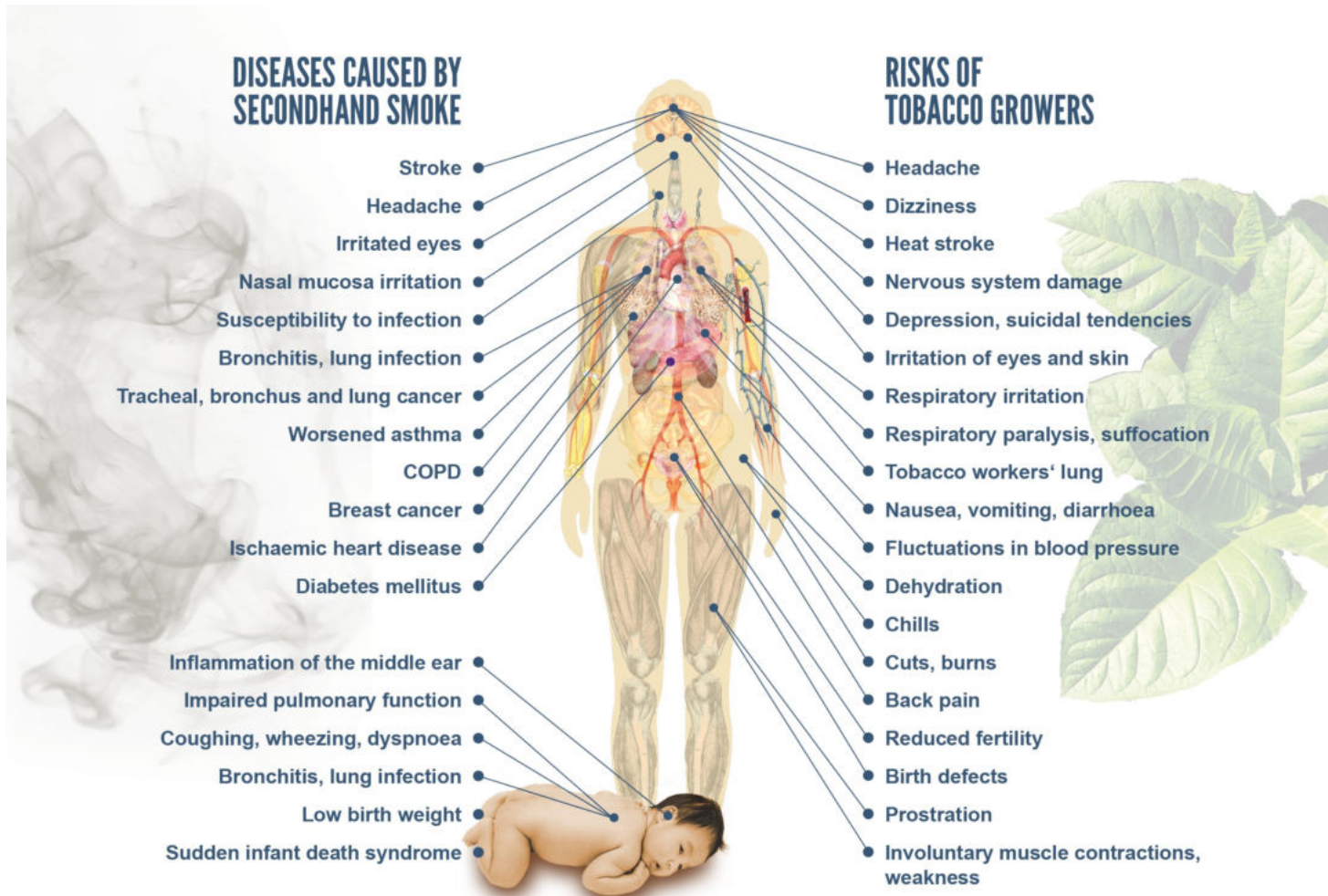




**Why is tobacco
a barrier to planetary health?**

L. Graen, CC BY-NC-ND 4.0

Tobacco's Toll on Health



Unfairtobacco

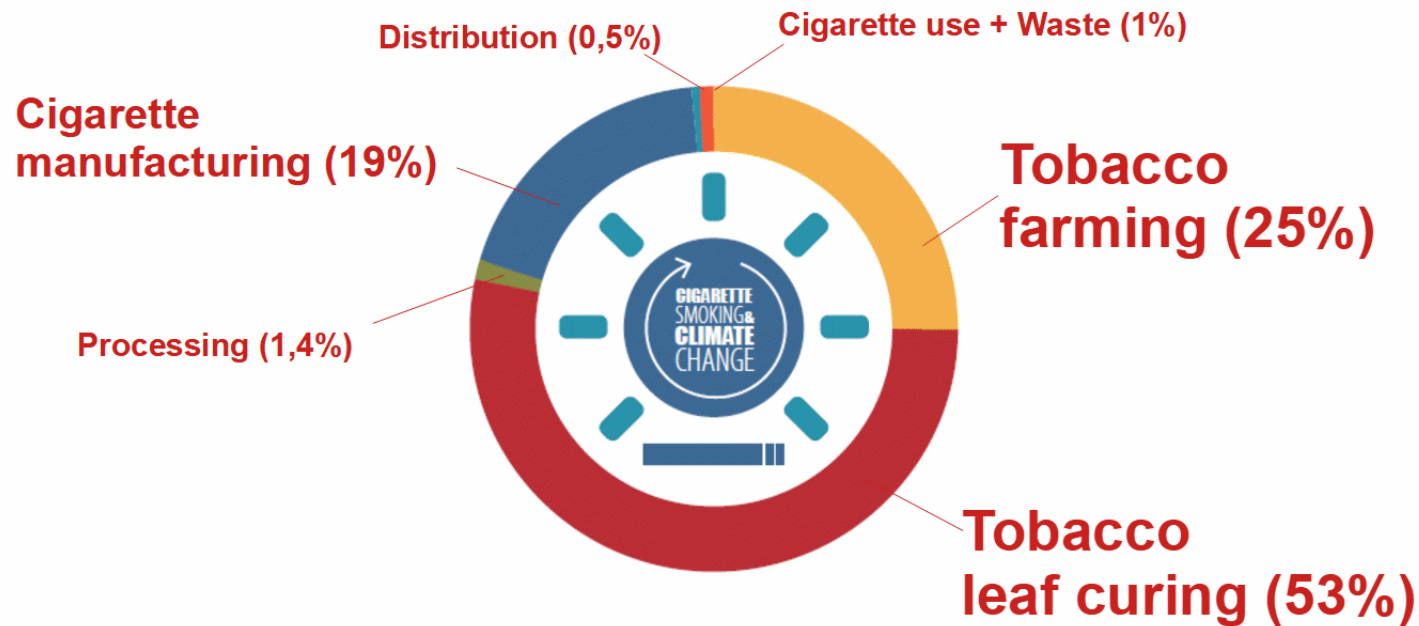
We expose how tobacco industry harms farmers, consumers and the environment.

Source: Unfairtobacco (2017): Tobacco | Decent Work. How tobacco control contributes to achieving Sustainable Development Goal 8. Berlin.
Graphic: Michael Tümpner, www.neungradplus.de

Cigarette Industry's Toll on Climate

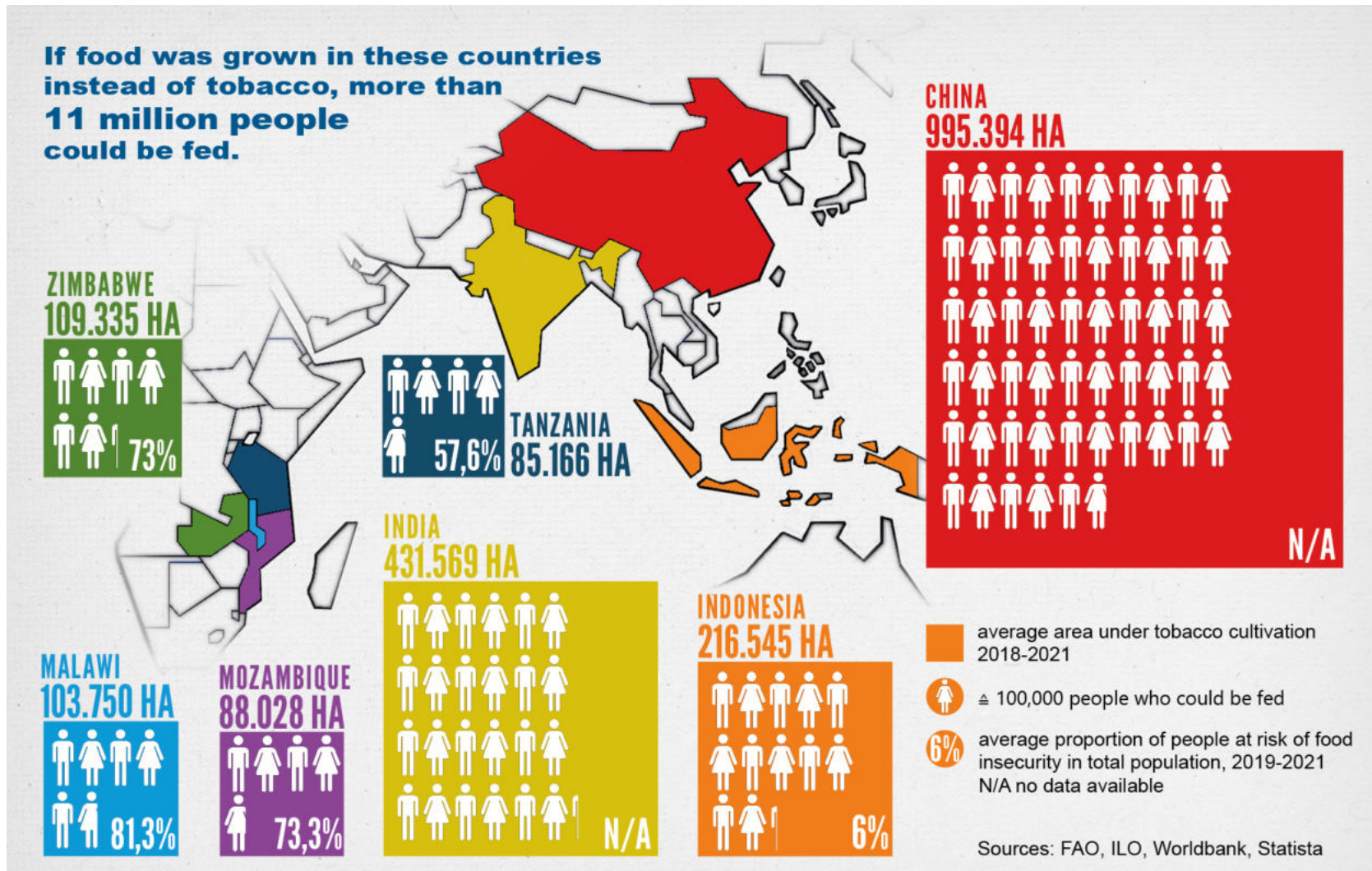
Annual carbon footprint of the cigarette industry

84 mio. tons CO₂ equivalents



Source: Zafeiridou M, Hopkinson NS, Voulvoulis N. Cigarette smoking: an assessment of tobacco's global environmental footprint across its entire supply chain, and policy strategies to reduce it. Geneva: World Health Organization; 2018.

Tobacco Growing's Toll on Food



Solution: Food, not Tobacco



Yellow corn for Nayarit



Hops, Kiwis & Apples



Forest, mushrooms & fish



Honeybees



Sunflower oil



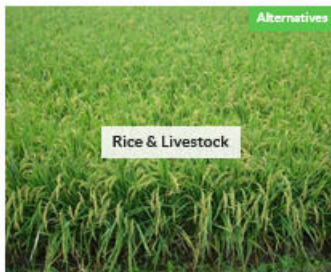
Olives, oats & potatoes



Olives, thyme & milk



Beans & Cassava



Rice & Livestock



Wine, Grape Juice & Sweet Potato



Soybean Cooperative



India's alternatives: addition not substitution



China after Tobacco



Mixed cropping of food



Fairtrade Peanuts



Organic vegetables on local markets

Barrier: Tobacco Industry

Global Progress Report 2021

On the implementation of the WHO Framework Convention on Tobacco Control

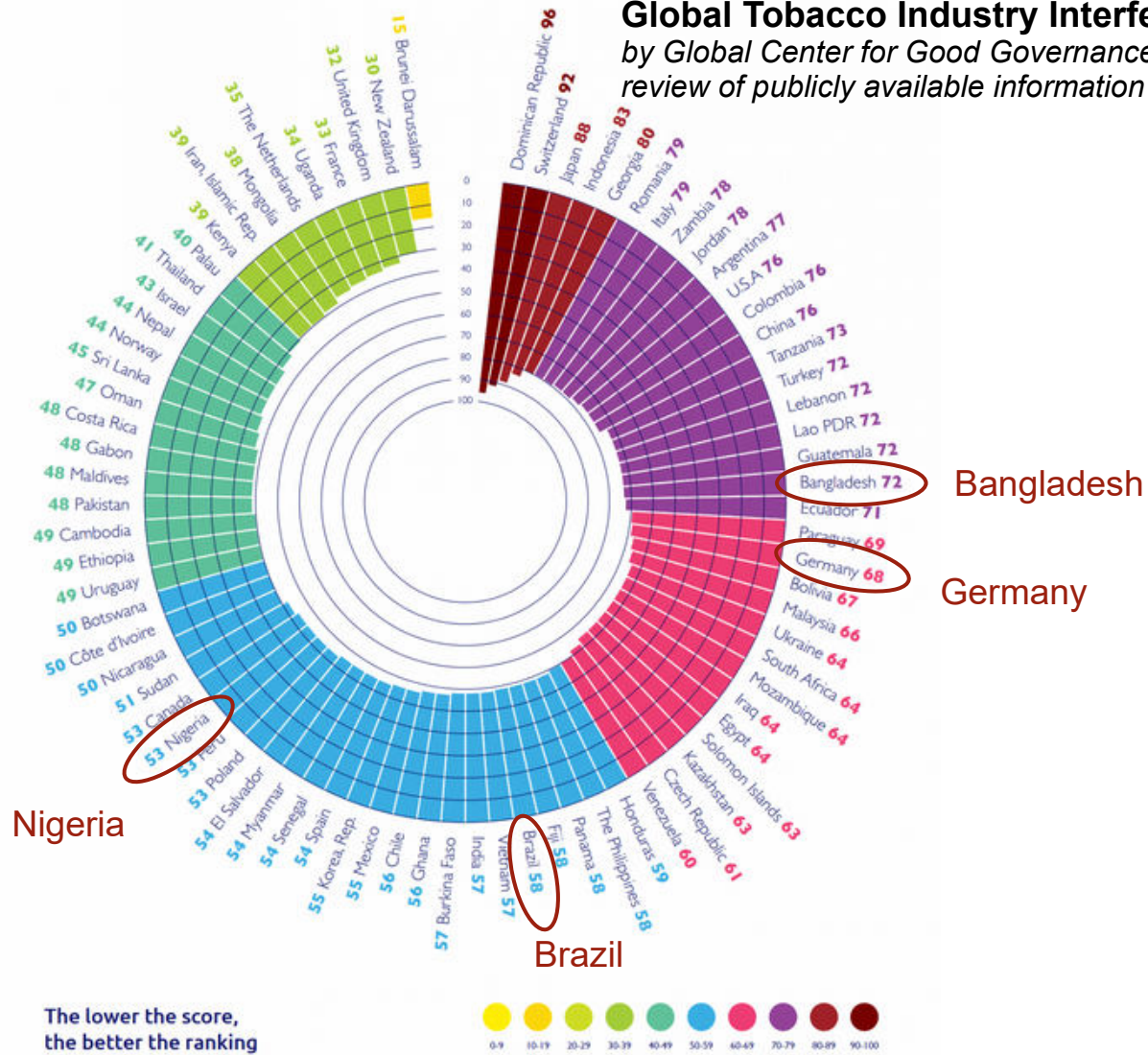
„In this reporting cycle,

the most frequently mentioned gap was the lack for financial resources, and

the most frequently mentioned BARRIER was the interference by the tobacco industry.“

Global Tobacco Industry Interference Index 2021

by Global Center for Good Governance in Tobacco Control review of publicly available information in 80 countries





Thank you for your attention.

Sonja von Eichborn
Director Unfairtobacco

eichborn@unfairtobacco.org
[@SEichborn](https://www.instagram.com/SEichborn)
+49 – 1511 – 5590 191

T. Lupick, CC BY-NC-SA 2.0

Unfairtobacco

We expose how the tobacco industry harms farmers, consumers and the environment